

Special Admission Requirements

Applicants must meet general admission requirements:

- *Municipal Employee in KMU Member Utility*
- *Physically Able to Climb, Withstand Rigors of Line Work*
- *Valid Kansas Driver's License and Good Driving Record*
- *18 Years of Age*
- *Enjoy Outdoor Work*

Certification / Equipment Training

Apprenticeship program will include certification & equipment training on:

- *Bucket Truck Operation*
- *Digger Derrick Truck Operation*
- *Forklift Training & Certification*
- *CDL & MUTCD Traffic Control Methods*

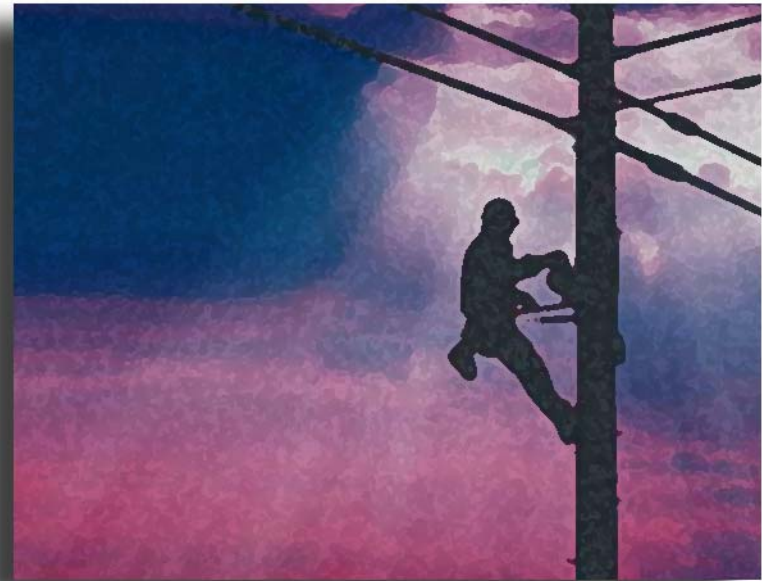
For additional information or to enroll in the Lineman Apprenticeship Program, please call:



Jerry LeDuc
Job Training & Safety Specialist
Kansas Municipal Utilities
101 1/2 North Main
McPherson, Kansas 67460
cell 785/230-2521
ph 620/241-1423
fx 620/241-7829
e-mail: jleduc@kmunet.org
web: www.kmunet.org



kansasmunicipal**utilities**



KMU Lineman Apprenticeship Program

101 1/2 North Main
McPherson, Kansas 67460
ph 620/241-1423
fx 620/241-7829
e-mail: jleduc@kmunet.org
web: www.kmunet.org



KMU Lineman Apprenticeship Program

A Comprehensive Apprenticeship Training Program Providing Cities with the Tools Needed to Cultivate and Develop Electric Linemen from within Their Own Communities

Summary



The KMU Lineman Apprenticeship Program is a comprehensive, long-term training program providing both entry-level and experienced utility employees the skills needed to obtain federally-recognized journeyman's credentials. The program includes:

- Correspondence Training in Professional, Nationally-Recognized Lineman Curriculum
- On-Site Classroom Instruction (*Quarterly in 26 Locations Statewide*)
- On-Site Testing (*Monthly in 26 Locations*)
- Fast-Track Training for Experienced Linemen
- Personal Assistance in Meeting Kansas Department of Labor Apprenticeship Requirements
- Hands-On Training Opportunities, As Feasible

The standard length for completing the apprenticeship program is four years. Each year is broken into four semesters, typically covering four modules from the curriculum in each semester.

Cost

- \$600 per year (*KMU Members*)*
- \$750 per year (*Non-Members*)

**\$100 credit provided to those member utilities currently participating in a KMU Regional Training Group.*

Year Three

1st Semester

- Instrument Transformers - Theory
- Load Tap Changers - Theory
- Relays - Theory

2nd Semester

- Transformer - Connections
- Transformers: Single-Phase Pole-Mount Installation
- Transformers: Single-Phase Pad-Mount Installation

3rd Semester

- Voltage Regulators - Theory
- Arresters
- Electrical Line Tools

4th Semester

- Print Reading - Construction
- Print Reading - Electrical
- Print Reading - Mechanical

Year Four

1st Semester

- Capacitors
- Switches - Installation
- Transformers: Three-Phase Pad-Mount Installation

2nd Semester

- Transformers: Bank Installation
- Transformers: Pad-Mount Maintenance
- Transformers: Pole-Mount Maintenance

3rd Semester

- Voltage Regulators - Line Installation
- Conductors - Overhead Maintenance
- Conductors - Locating Underground

4th Semester

- Conductors - Underground Maintenance
- Substations - Inspection
- Switches - Maintenance

Year One

1st Semester

- Electrical Line Tools – Intro.
- Oil Handling
- Tailgate Meetings
- Hand Tools

2nd Semester

- Electrical Circuits – Intro.
- Electrical Power – Transmission and Distribution Systems
- Fire Safety
- Lifting and Moving Materials by Hand

3rd Semester

- General Math – Whole & Negative Numbers
- General Math – Decimals
- General Math – Fractions
- General Math – Ratios & Percentages

4th Semester

- Pole Top Rescue
- Rubber Gloves & Other Protective Gear
- Bucket Rescue
- Basic Tree Trimming

Year Two

1st Semester

- Electrical Services - Theory
- Vehicles w/ Hydraulic Equip - Digger Derrick
- Poles - Installation
- Street Lighting
- Substations - Theory

2nd Semester

- Bucket Trucks
- Circuit Breakers - Theory
- Conductors - Underground Joining & Terminating
- Conductors - Overhead Joining & Terminating

3rd Semester

- Electric Services - Overhead Installation
- Conductors - Underground Installation
- Electric Services - Underground Installation
- Conductors - Overhead Installation

4th Semester

- Switches - Theory
- Transmission & Distribution Underground Systems - Theory
- Transformers - Theory
- Transformers - Connections Theory

Background

One of the most significant problems that many Kansas public power systems currently encounter is the ability to employ a well-trained and experienced electric linecrew. Many municipal electric utilities in Kansas, particularly those located in small towns and other rural areas, often find it hard to find and retain qualified electric linemen.

In an effort to assist member utilities with this ongoing challenge, Kansas Municipal Utilities (KMU) is pleased to introduce a new KMU Lineman Apprenticeship Program. The program combines a respected lineman curriculum, classroom training and testing, correspondence instruction, and face-to-face assistance from KMU staff. The desired end result is a four-year program that – combined with hands-on experience at the utility itself – develops journeyman electric linemen of great value to the city and community.



Goals & Objectives

The KMU Lineman Apprenticeship Program is a four-year program designed to prepare entry-level (apprentice) electric employees with the knowledge they need to perform their jobs safely and efficiently. The program also offers a chance for seasoned veterans in public power systems to obtain their professional credentials.

Specific Goals

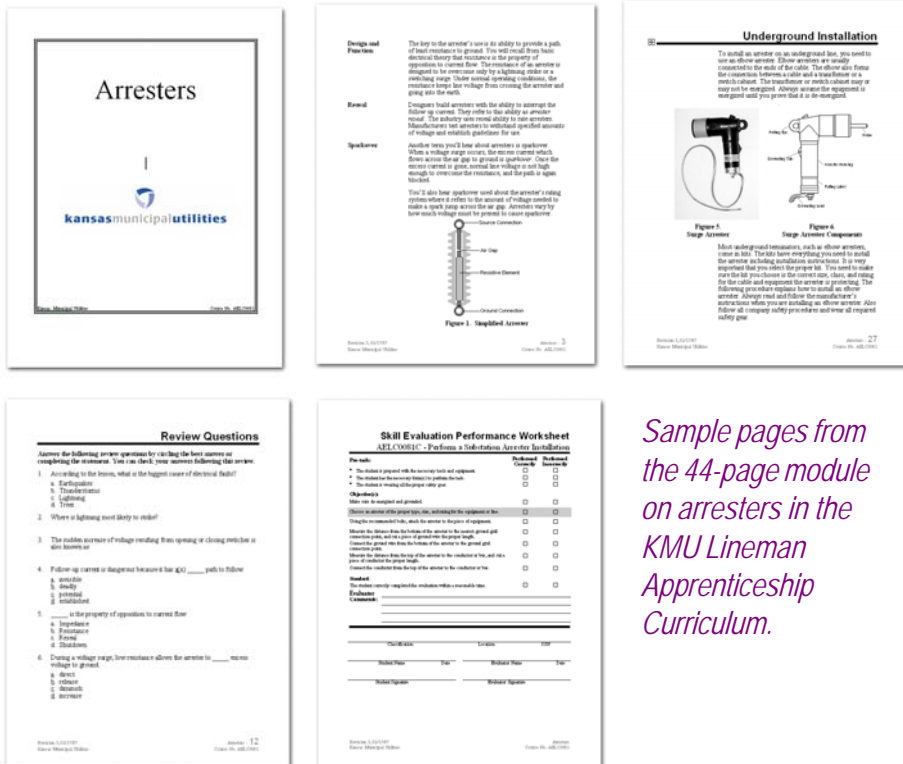
- To prepare apprentice-level students for employment as electric linemen
- To work with experienced utility workers to help them achieve the goal of obtaining a federally recognized journeyman's credential.
- To provide on-site training, when feasible, to reduce the cost and liability of municipal utility employees having to travel out of the community for training.
- To develop a partnership with our cities to meet specific training needs and become a model training program for the state.

Curriculum

The KMU Electric Lineman Apprenticeship Curriculum includes 72 in-depth modules on topics ranging from pole climbing and line tools to substation inspection and overhead maintenance of conductors. Many modules are 50+ pages in length and include detailed instruction, exercises, sample tests, hands-on guidance, and skills evaluations.

The KMU Curriculum was purchased in its entirety from investor-owned utility Alliant Energy, which currently uses the training for its electric linemen in Iowa, Illinois and Wisconsin. The same curriculum is also currently in use by the Iowa Association of Municipal Utilities (IAMU) and Municipal Electric Systems of Oklahoma (MESO).

The result is a comprehensive training program which combines classroom and correspondence academics with practical hands-on training and has been endorsed by the U.S. Department of Labor, Bureau of Training.



Sample pages from the 44-page module on arresters in the KMU Lineman Apprenticeship Curriculum.

On-Site Classroom Instruction & Testing

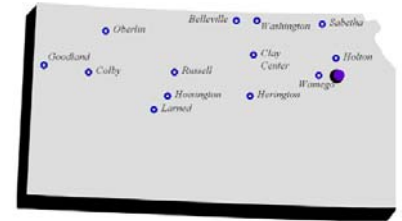
Each month, KMU Job Training & Safety staff travel to the twenty-six member communities that are currently participating in the two association "Regional Training Groups" currently offered by KMU. The goal of the Regional Training Groups is to fill all the training needs of member city employees.

These Regional Training Group sites will also be utilized for the KMU Lineman Apprenticeship Program. Every three months, classroom instruction for each apprenticeship semester will be provided at the 26 locations across Kansas. In addition, testing opportunities will be made available at each location every month. Take together, nearly all the areas of Kansas are well covered and a nearby location for any KMU member should not be too far away.

KMU Northern Regional Training Group

(Lineman Training February, May, August & November)

- Belleville
- Clay Center
- Colby
- Goodland
- Herington
- Hoisington
- Holton
- Larned
- Oberlin
- Russell
- Sabetha
- Wamego
- Washington



KMU Southeast Regional Training Group

(Lineman Training March, June, September & December)

- Burlington
- Chanute
- Coffeyville
- Fort Scott
- Fredonia
- Gardner
- Garnett
- Hillsboro
- Iola
- Mulvane
- Neodesha
- Wellington
- Winfield

