

Registration

KMU Competent Person Training Workshop

Cancellation Policy: Cancellations received one week prior to workshop entitle registrant to a full refund.

City/Utility: _____

Address: _____

Phone: _____

Email: _____

Name/Title

1.

2.

3.

4.

Fees:

\$95 per person per session (member)

\$120 per person per session (non-member)

of persons for Trenching _____

of Persons for Confined Space _____

_____ persons @ \$95 ea _____

_____ persons @ \$120 ea _____

Balance Due: _____

Check enclosed

Bill City/Utility (PO# _____)

101 1/2 North Main
McPherson, Kansas 67460
www.kmunet.org

kansasmunicipalutilities



kansasmunicipalutilities



Specialized Safety Training Courses

Competent Person Training for Trenching & Excavation and/or Confined Space Entry

Wednesday, March 24, 2010

Thursday, March 25, 2010

*Hosted by
Clay Center Public Utilities*

TRAINING NOTICE:

Kansas Municipal Utilities (KMU) is sponsoring specialized Competent Person training in **Trenching & Excavation, Wednesday, March 24 and/or Confined Space Entry on Thursday, March 25, 2010**. This training will be held at the Evangelical Covenant Church in Clay Center, Kansas.

The registration fee is \$95 (members) or \$120 (non-members) per session. **The training will begin at 8 a.m. and conclude by 5:30 p.m. on both days.** The training sessions will be presented by Mid West Fire Training Associates.

This training is specially designed for municipal water and wastewater personnel, electric and gas utility workers, fire and rescue personnel, line and street crews, and others who need to be aware of trench and excavation hazards.

It is recommended that personnel update their Competent Person and Confined Space training every two to three years.

PRESENTERS:

Cheryl Treptow is an experienced fire and rescue trainer, having been employed at Mid West Fire Training Associates for the past 15 years. She has been certified as a Fire Service Instructor II since 1997. She is a Training Officer of Coffey Co. Fire District 1, New Strawn Station.

Steve Atkinson is a lieutenant with the Sedgwick County Fire Department. Steve has been a member of the rescue team since its inception. He is a certified Fire Instructor I and has been with Mid West Fire Training for over 10 years.

Trenching & Excavation

March 24th

The trench training is nationally recognized for compliance with OSHA 1926.650; 1926.51 and 1926.652. Participants will assemble hydraulic and pneumatic shoring systems in a simulated trench, and will be instructed in appropriate measures to take to eliminate trench/excavation hazards.



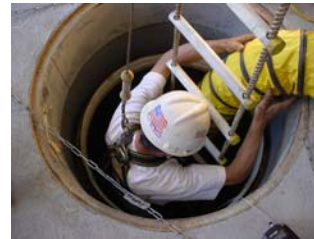
Topics include:

- Soil testing; actual hands-on practice
- Shoring and safety systems
- Participation in actual shoring of a mobile trench with hydraulic and pneumatic units
- Explanation and use of charts found in federal regulations

Confined Space

March 25th

The confined space training is recognized for compliance with OSHA 1910.146 and is a pre-requisite for Rescue Training and Kansas Department of Human Resources' requirements. The training includes strapping on a full body harness, setting up a retrieval system and entering a simulated confined space.



Topics include:

- Hazards associated with confined spaces
- Confined space permit requirements
- 12 general safety requirements, including atmospheric testing and ventilation testing
- Classroom review and exam for Competent Person and Confined Space Entry

DATES & LOCATION:

Competent Person for Trenching & Excavation

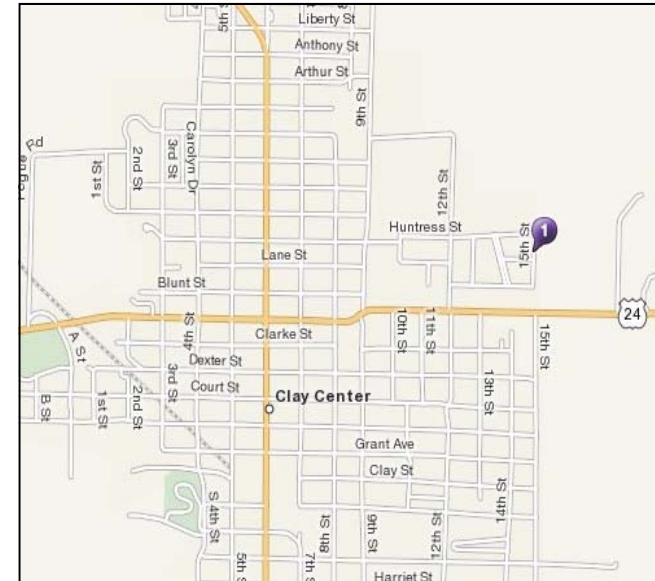
Wednesday, March 24, 2010
and/or

Confined Space Entry

Thursday, March 25, 2010

Evangelical Covenant Church
Fellowship Hall
1330 15th Street
Clay Center, Kansas

CLAY CENTER MAP



NOTE — Please dress to work.

Both sessions include hands-on activities. Classes will be in real world conditions, and you may get dirty or wet.

CERTIFICATION CREDIT:

Water and wastewater operators who attend will receive 5 credit hours each day towards certification or renewal.